

# SERIES 75

## GAL PLASTIC VALVES



### DESCRIPTION

Series 75, "GAL" plastic valves are designed for the control of irrigation systems of field crops, vineyards and orchards. The exceptional hydraulic characteristics of the Series 75 valves, enable very high flow rates at low head losses. Wide range of control functions, allows the design of the irrigation networks to optimal operation.

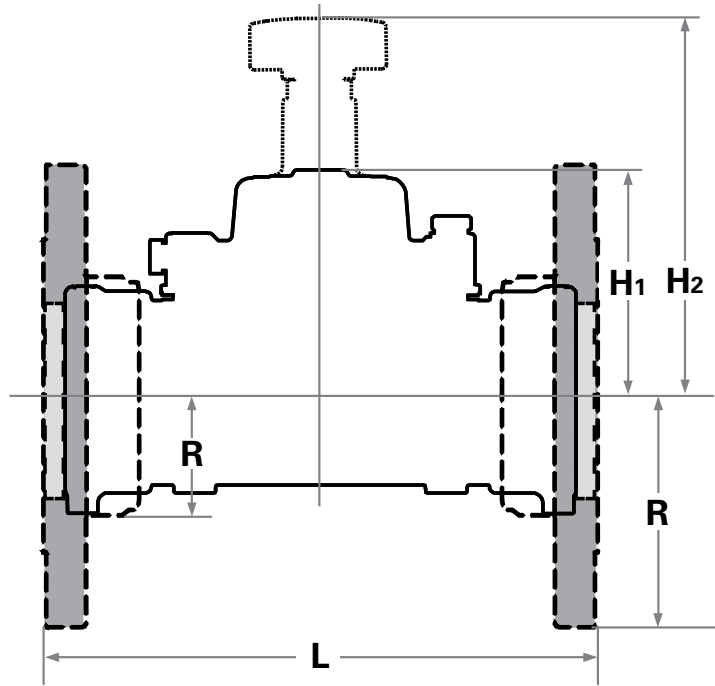
### FEATURES & BENEFITS

- Structural simplicity
- Superb hydraulic performance
- Reliable control of corrosive liquids
- Light-weight, cost-saving
- Minimum maintenance - maximum dependability
- Operates at a wide range of flow rates, from near zero to maximal flow
- Electric 2-Way or Hydraulic / Electric 3-Way actuation
- Optional flow control throttle handle
- Suitable for Low pressure systems

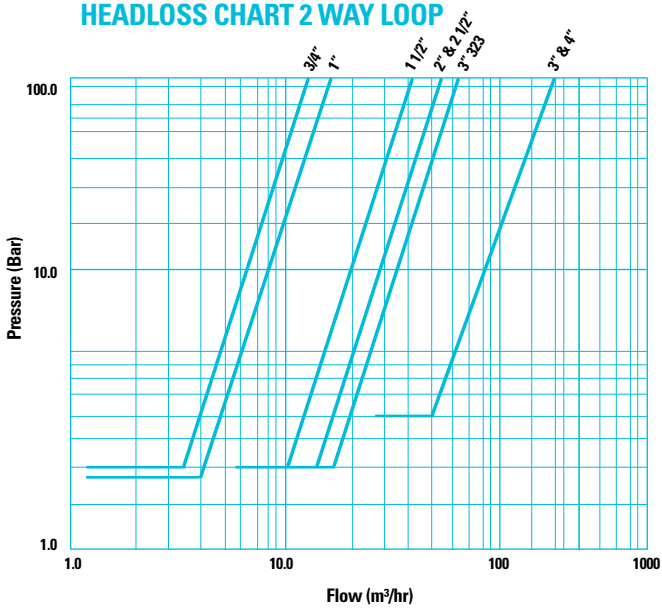
MODEL		CONNECTION TYPE	MAX FLOW RATE M <sup>3</sup> /HR	MIN FLOW RATE	FLOW RATE FACTOR		PRESSURE RANGE		VOLUME CONTROL CC	DIMENSIONS				WEIGHT KG
MM	INCH				KV	CV	METER	PSI		H1 MM	H2 MM	R MM	L MM	
20	3/4"	Thread	6	<1	7.5	9	9 - 80*	15 - 115*	36	38	100	18	113	0.2
25	1"	Thread	10	<1	15	17.5	9 - 80*	15 - 115*	36	38	100	22	124	0.2
35	1.1/2"	Thread	25	<1	60	70	7 - 100*	15 - 150*	180	67	112	30	188	0.9
50	2"	Thread	40	<1	71	82	7 - 100*	15 - 150*	180	67	112	37	199	0.9
80	3" (323)	Thread	90	<1	90	92	7 - 100*	15 - 150*	180	67	112	54	236	1.4
80	3"	Thread	145	<1	120	140	4 - 100	6 - 145	250	100	180	60	260	2.0
80	3"	Flange	145	<1	120	140	4 - 100	6 - 145	250	100	180	100	280	3.1
100	4"	Flange	145	<1	120	140	4 - 100	6 - 145	250	100	180	110	280	4.0

Maximum operating temperature 60°C (140°F)

\* Low pressure diaphragms - Minimal opening pressure: 3/4" - 1": 6 Meter / 9 psi, 1.1/2" - 3": 3 Meter / 5 psi



**HEADLOSS CHART 2 WAY LOOP**



**HEADLOSS CHART 3 WAY LOOP**

